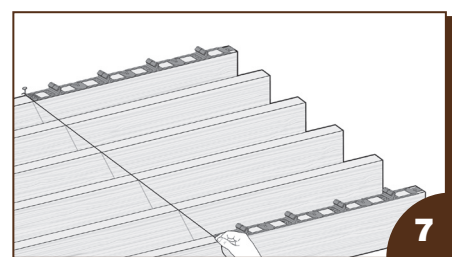
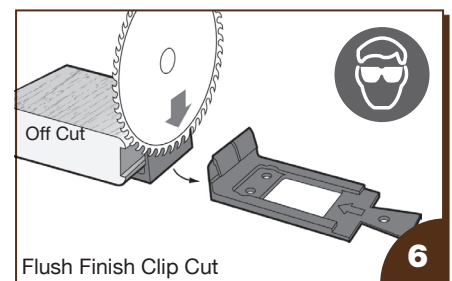
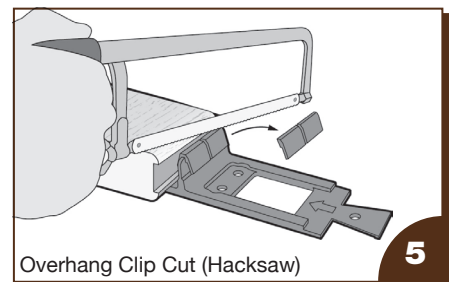
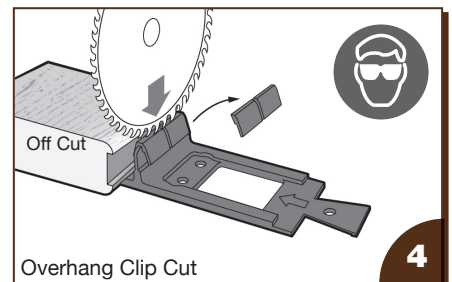
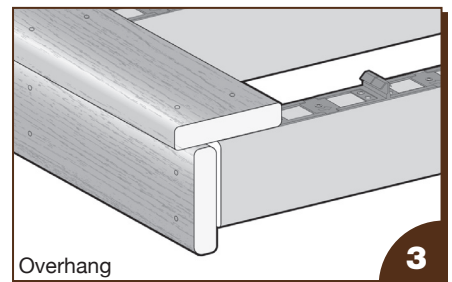
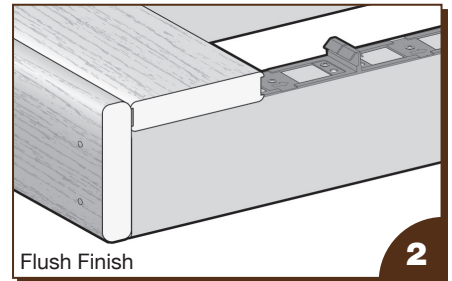
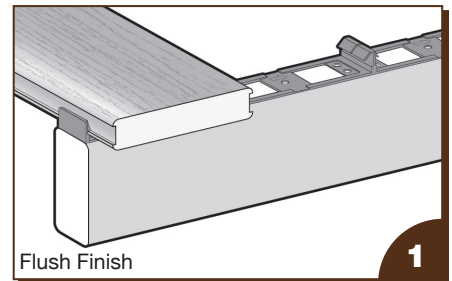




The Sustainable Alternative



Fixing Instructions for ModWood XTREME GUARD®

Please read all prior to starting installation.

For installation in bushfire prone zones go to www.modwood.com.au to download fixing instructions of 'BAL-system' that is certified.

Storage and Handling

Store ModWood on edge in a flat, dry area under roof and off the ground with supports. Always carry ModWood on edge.

Ventilation

Good ventilation for your deck is essential. Check our chart for ground clearance information. Do NOT seal off deck ends, preventing airflow, including garden beds, trees or solid objects.

Installation Methodology

Spend time up front ensuring the Snap-LOC clips on the perimeter of the deck are in alignment first. This will ensure placement of the intermediary clips simple, when using a string line. Alignment of clips is critical and will make 'walking in' of the deck boards easy.

Typically the starter board at perimeter of deck is parallel with the building. Use the square edge profile board which you must face fasten with screws. Note, ModWood has colour coated head screws that match the board colour. You will need to install a 4mm packer (you can use the Snap-LOC Off-Cuts) underneath the board so it remains level with the next board due to the height of the Snap-LOC clip.

Next, install a grooved board with a 6 mm gap between the starter board (square edge) using the Snap-LOC concealed fixing.

There are other options for starting the deck boards as follows:

Flush Finish

Install the Snap-LOC clip upright flush with the front of the joist, then install a square edge board on the vertical face of the deck, acting as a fascia board.

(Refer to diagram 1 and 2)

This will necessitate the removal of the Snap-LOC upright outside teeth and last half board width of the clip by using a hacksaw or drop saw.

(Refer to diagram 6)

Overhang

Fix the clip to the front joist making sure the front of the "dovetail" joiner is flush with the front joist. Cantilever the square edge starter board past the joist end and install a right angle aluminium bracket on the underside.*

Note there are two suggested ways for removal of Snap-LOC upright outside teeth.

1 cutting the clip with a drop saw (diagram 4)

2 cutting the clip with a hacksaw (diagram 5)

Important Note: Cutting the clip with a drop saw will give you the cleanest cut however, it is critical you place a piece of Off-Cut decking into the clip prior to cutting, otherwise the vibration of the saws teeth hitting the clips tooth can cause the tooth to shatter.

Make sure the correct adhesive type and where it must be applied to the Snap-LOC clips is followed. Detailed fixing instructions are supplied with Snap-LOC clips. Use Snap-LOC model number KSL137N.

Don't forget the 2 mm end butt gap between the board ends!

Do NOT create a seam of butt joints. Make sure butt joint gap is positioned in the middle of the clip.

* You will need to face fix the square edge starter board using ModWood colour coated head screws. You will need to rebate the fascia board to the thickness of the aluminium bracket to enable the fascia board to fit flush with the joist ends.

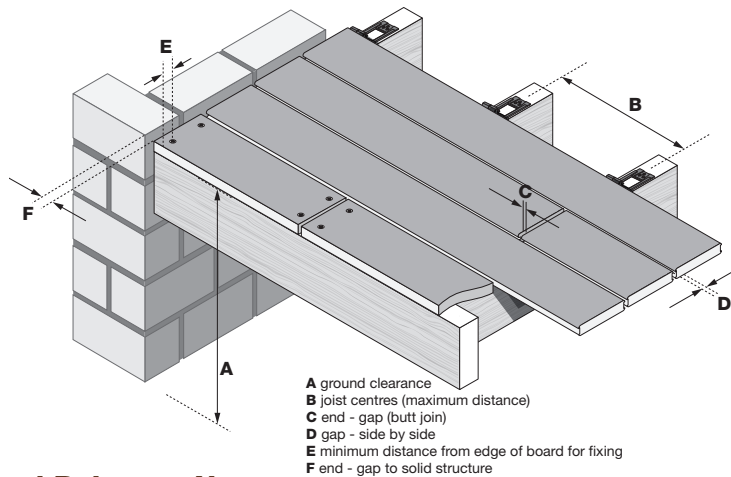
How to ensure the correct face up is installed?

The heavily embossed face (rough texture) must be installed facing upward, only this surface has been manufactured to the P5 anti-slip rating. To assist with ease of identification, we have included an arrow in the inkjet message along the board edge which indicates the correct face up to be installed. It is important that the installer is observant, and ensures the correct face is laid to avoid having to remove boards at a later stage.

Dimensions	137 x 23mm	137 x 23mm
Profile	Grooved	Square Edge
A minimum ground clearance	150 mm	150 mm
A minimum clearance over concrete	50 mm	50 mm
B joist centres (max distance)	450+ mm	450+ mm
C minimum end-gap (butt join)	2 mm	2 mm
D minimum gap – side by side	4 mm	4 mm
E minimum distance from edge of board for fixing	20 mm	20 mm
F minimum end-gap to solid structure	6 mm	6 mm
suitability for fixing to steel substructures	yes	yes
fixing over concrete	refer to website	refer to website
suitable for vertical applications	yes*	yes*
suitability for commercial applications ⁺	yes	yes

⁺ depending on concentrated load (kN) this may be reduced for commercial applications – contact ModWood directly for deflection calculation.

* When used in vertical applications, the minimum side by side gap must be 8mm. Compliance with ModWood's ventilation requirements around perimeter of the deck sub floor is mandatory.



General Points to Note:

- 1 Ensure the sub frame joists are level with each other, this will make installation a lot easier and simpler.
- 2 Do NOT use an impact driver when installing screws. Use adjustable drill driver on low to medium torque setting to reduce the risk of spin out!
- 3 Do not create a seam of butt joints. Stagger the butt joints.
- 4 ModWood metal joist colour coated head screws are suitable for metal joists with a maximum wall thickness of 4 mm.
- 5 It may be necessary to rip saw length ways along the width of the last board so you can position it against the building. Note this board will need to be screw fastened.
- 6 Never use coloured chalk marking string lines!
- 7 XTREME GUARD cannot be installed on top of existing decking boards.
- 8 ModWood must not be used as part of the frame or used as a structural element.
- 9 Use ModWood colour coated head screws if requiring to screw fasten ModWood XTREME GUARD – follow directions as stated on packaging.
- 10 When face fixing with screws do not install screw closer than 15 mm from board end and no closer than 20 mm from edge. Screw head must finish flush with the board surface. ModWood has a Deck Screw Setter tool which makes this very easy! The pilot hole **must be pre-drilled slightly greater than the 'outside diameter'** of the screw thread.
- 11 Non-use of ModWood's recommended fastening systems is to be avoided.
- 12 XTREME GUARD shall be installed over a minimum of three joists - no single bay installation.
- 13 Picture framing the deck perimeter will give you a more professional finish.

WARNING!

Do NOT allow boards to lay around uncovered prior to installation. Uncovered boards will be heated up by the sun and this will result in the boards growing length ways and end butt gaps will increase significantly, once the boards "normalise"!

Ensure boards are stored under cover whilst installing!

Thermal Expansion Properties

Do NOT leave boards sitting in full sun prior to fixing. Keep covered until ready to lay/fix.

As ModWood expands in heat and sun, to avoid building stress into your deck and having possible lengthways shrinkage, it is best to fix your decking boards when the ambient temperature is less than 25°C.

The temperature of a ModWood board sitting in full sun on a warm to hot day for a length of time is approx. 20-30°C warmer than the ambient air temperature.

Static

This is a natural occurring phenomenon which is more prevalent in dry and windy environments with low relative humidity. See website for further information.

Caution About Heat and Fire

Heat from fire and reflection of sunlight from energy efficient windows can potentially damage the board surface. Low-emissivity (Low-E) glass can cause highly elevated heat build-up on decking. Contact the Low-E glass supplier for a solution.

Non-compliance of fixing instructions will void warranty.

Unsure?

Please make contact with ModWood directly and we will assist you.